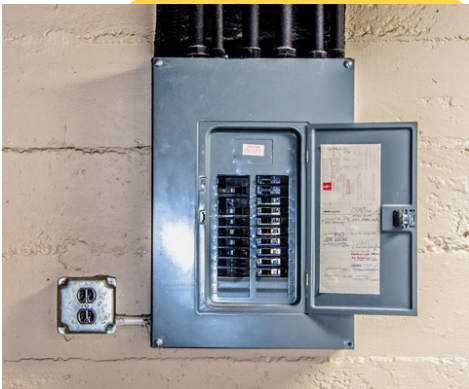


CASE STUDY



Home Factors
POWERED BY PGM

Electrical Panel Capacity and Risk Segmentation



HOMEOWNERS
OF AMERICA

The capacity of electrical panels is a critical factor influencing property risk. Electrical panels with a capacity under 100 amps are generally considered small and may struggle to meet modern electrical demands, which increases the risk of loss.

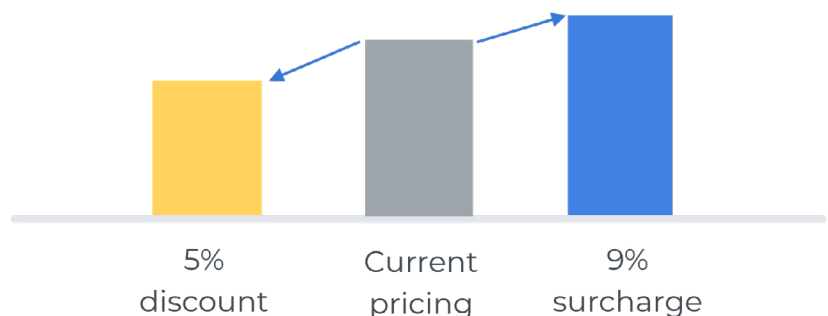
An analysis of HOA data revealed that properties with panels smaller than 100 amps could experience a ~45% higher claims frequency, highlighting the increased risk level associated with outdated or undersized electrical systems.

ACTIONABLE OUTCOMES

Home Factors enabled more accurate risk assessment and pricing, ensuring fairer policies for all customers while aligning premiums with underlying risks:

- **41% of policyholders** potentially have panels greater than 100 amps, potentially qualifying them for a **5% premium discount** due to lower associated risks.
- **13% of policyholders** likely have panels less than 100 amps, potentially correlating to a **9% premium surcharge** due to a ~45% higher claims frequency.

Electrical Panel Capacity Less than 100 Amps
Could indicate a ~45% higher claims frequency



41% of Policyholders
likely have a panel
GREATER THAN 100 amps

13% of Policyholders
likely have a panel LESS
THAN 100 amps